

MULTI-TIMING SEGMENTATION FOR LIVER CANCER TREATMENT

ALESSANDRO RICCI

3DIFIC

RESEARCH CENTER FOR PERINATAL AND REPRODUCTION MEDICINE



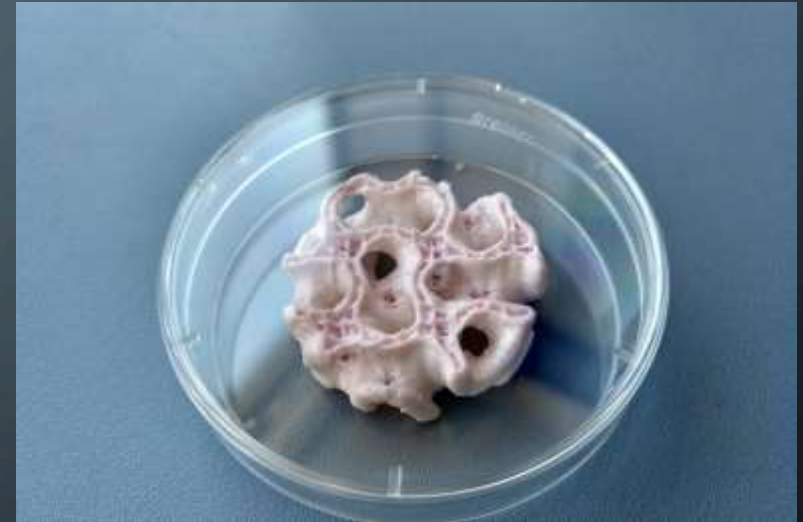
WHAT IS THE SPECIFICITY OF 3D PRINTING?

- Since 2015, our company was born like a real startup (1 person, no office, F&F money), in just 5 years we've developed medical publications, patents, 2 published innovative procedures
- 3D and 3D Printing are powerful leverages for innovation in medicine
- In fact, now that awareness has grown, we are experiencing a great propension for adoption

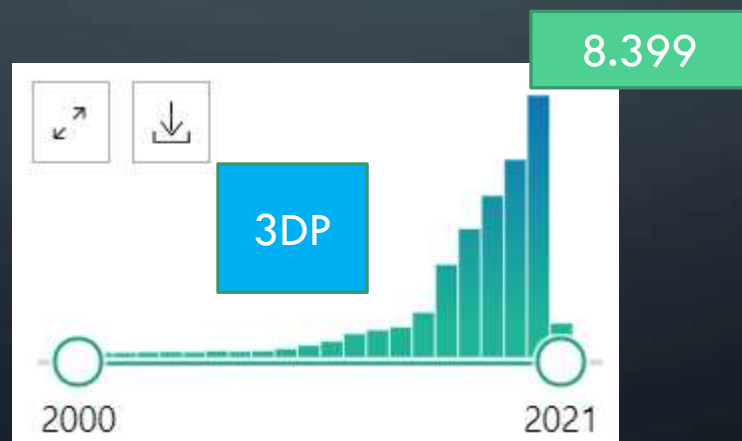
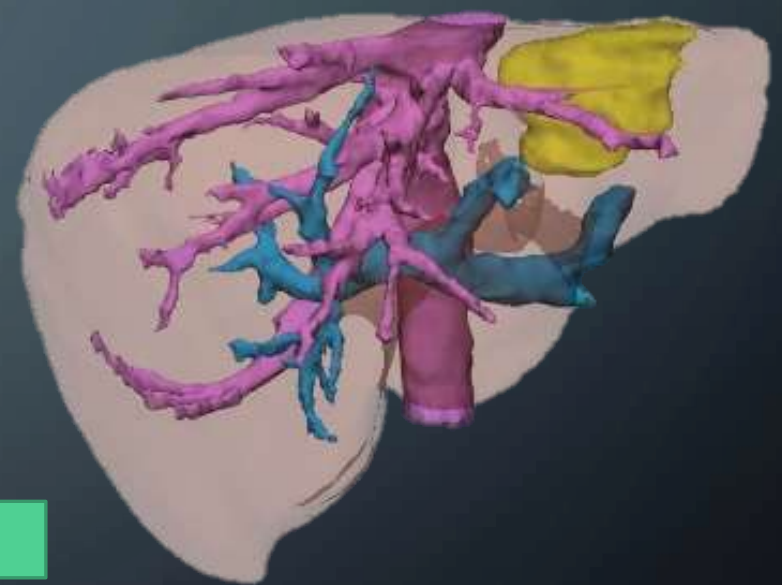
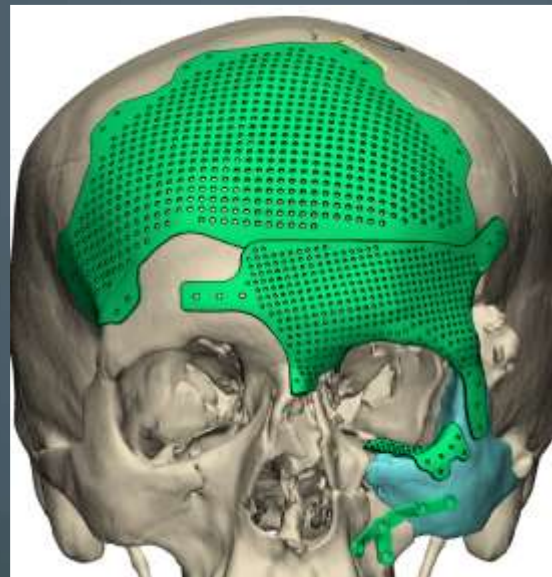




IN THE BEGINNING...

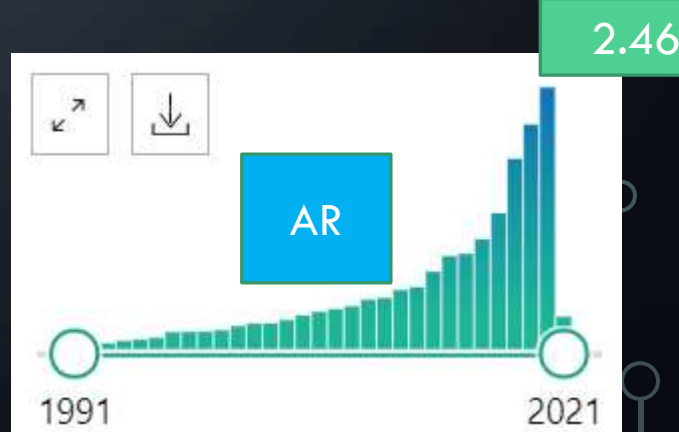
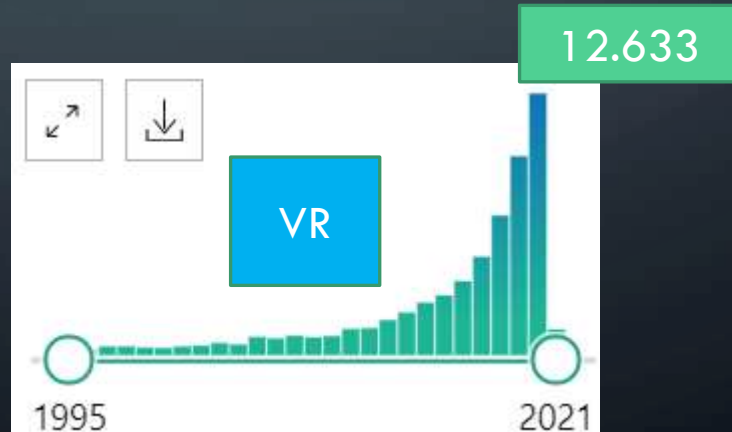
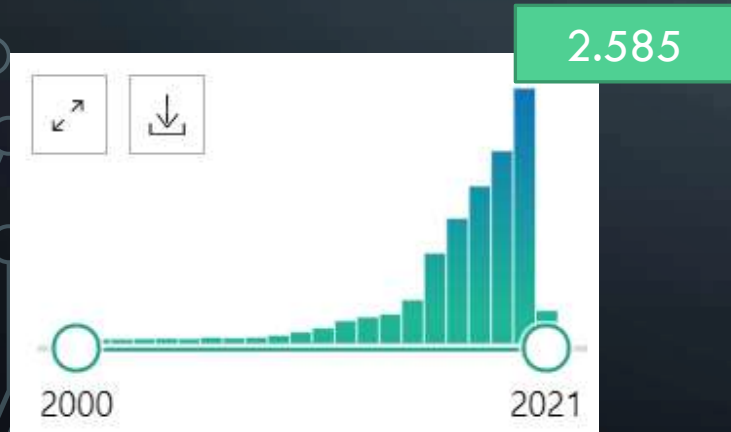
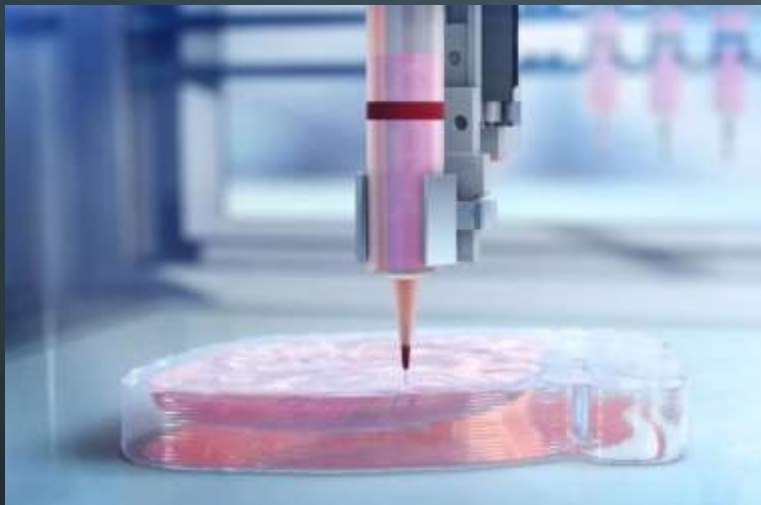


TODAY





TOMORROW

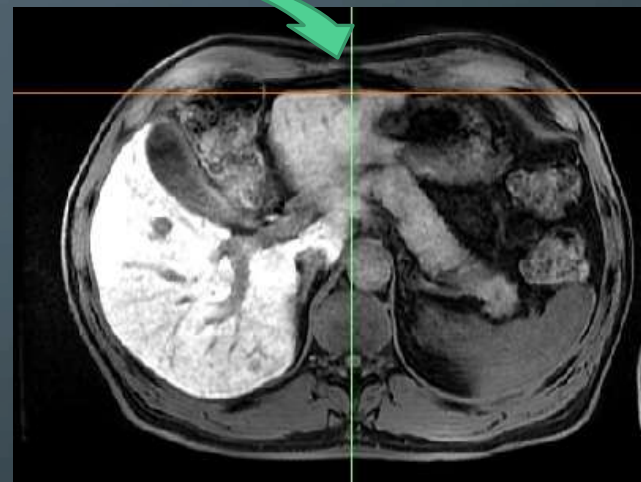
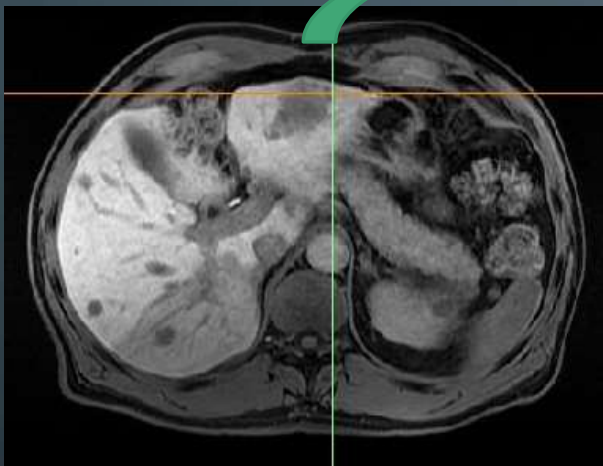




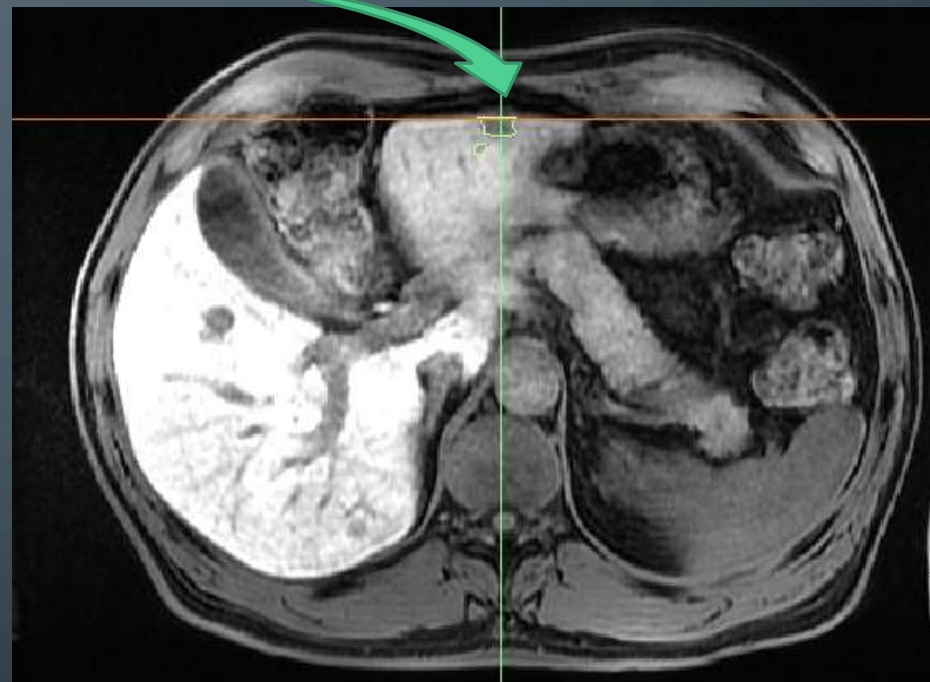
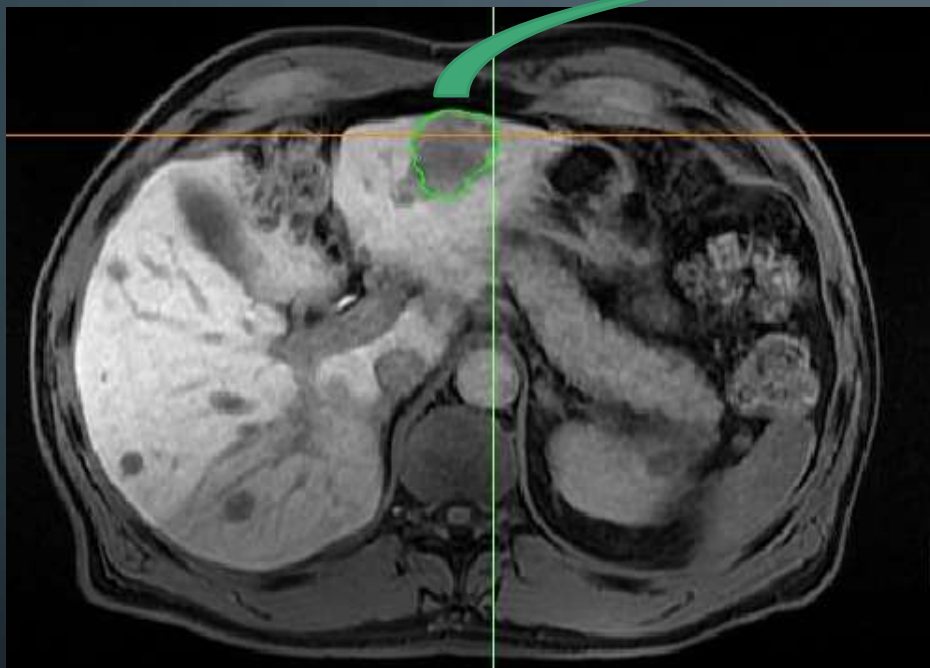
MULTI TIMING

- Problem: managing "missing" lesions
 - Disappearing Liver Methastases (DLM) are a kind of the so called Missing Lesions; DLM can occur after preoperative chemotherapy, when lesions are reduced in shape and dimensions. Sometimes they can't be seen anymore in the new preoperative CT
 - In surgery, margins are recommended to be at least 1cm from the edge originally in contact with the lesion
 - This is not always easy to reconstruct

CT IMAGING



CT IMAGING

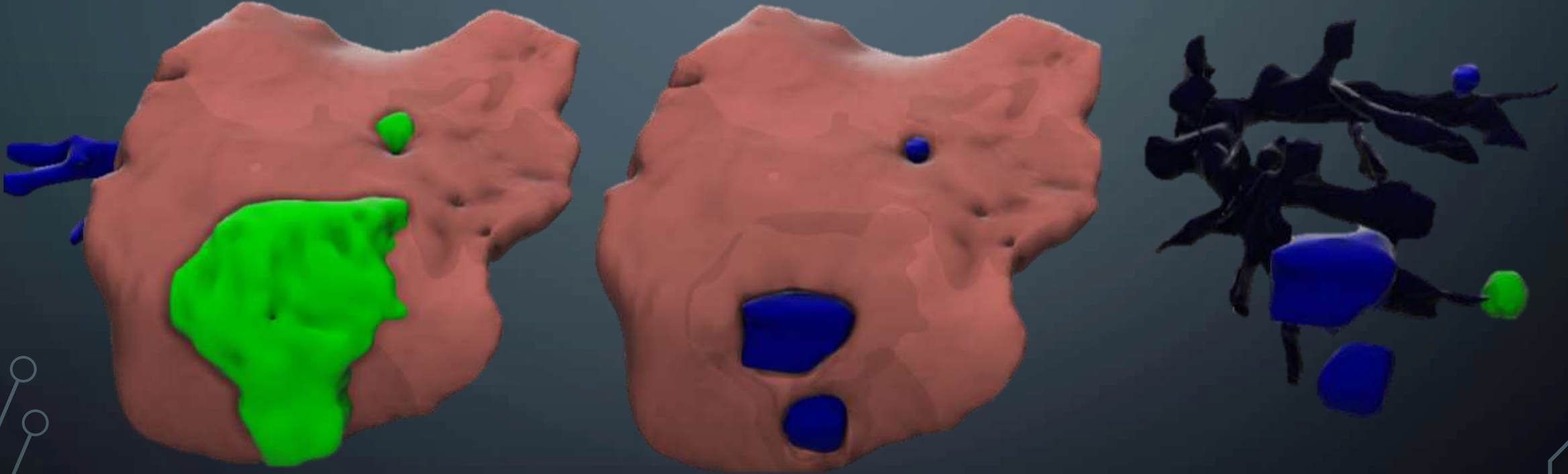


CT IMAGING





3D IMAGING





3D IMAGING



THANKS



3DIFIC srl
PERUGIA - ITALY
www.edfic.it

